



Chelsea®



Hawthorne™



Amherst®



Arlington®



Ashfield™



Avalon™



Chelsea®



Gibson®



Hawthorne™



Arlington®



Avalon™



Shelburne™



Sheridan®



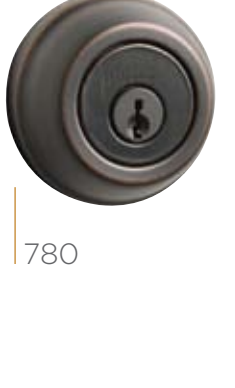
Sonoma®



Wellington®



980



780



Key Control™ Deadbolt



Arched Rose with Commonwealth®



Oval Rose with Tustin®



Pembroke™



Hancock®

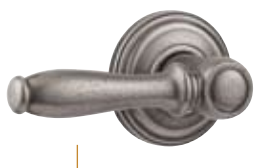
Designer Roses



Arched Rose



Oval Rose



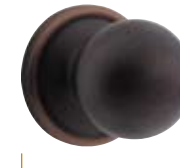
Ashfield™



Avalon™



Brooklane®



Circa®



Abbey®



Cameron®



Copa®



Lido®



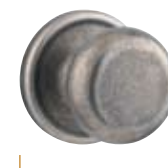
Pembroke™



Tustin®



Commonwealth®



Hancock®



Laurel®



Phoenix®



Dakota™



*Farmington®



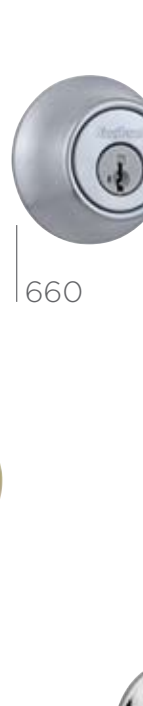
Dakota™



Dorian®



Delta®



Polo®



660



Tylo®



Cove™



Cove™



Delta®



Dorian®

*Farmington available through January 4, 2010 (not available in SmartKey).

RESIDENTIAL ELECTRONIC LOCKS



Powerbolt®



SmartCode™



SmartCode™

Re-key As Easy As



1 Insert functioning key & turn 1/4 turn clockwise.



2 Insert & remove the SmartKey learn tool. Remove functioning key.



3 Insert new key & turn 1/2 turn counter-clockwise. Your lock is now re-keyed!

You must have your functioning key & your learn tool for the system to work.

FEATURES:

NEW TECHNOLOGY

Locking bar, racks and pins are made out of stainless steel for increased strength & durability.

BUMPGUARD™

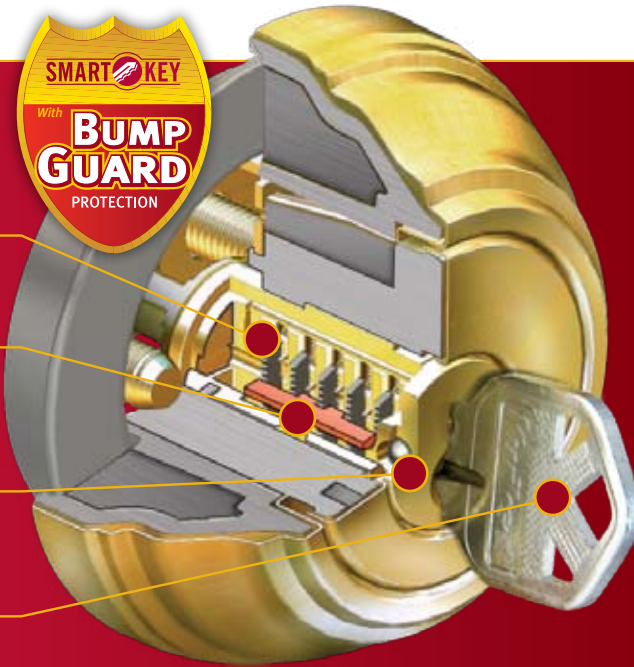
Patented side locking bar technology replaces a traditional pin & tumbler design to protect against lock bumping.*

DRILL RESISTANCE

Cylinder uses two steel balls inserted into the front of the key face to resist attack from drilling.

KEY IT YOURSELF

Lock is re-keyable in less than 30 seconds by using the included learn tool without removing the lock from the door.



*Lock bumping—an attack technique using specially cut keys that can defeat conventional pin & tumbler locks.

Warranty

Kwikset, a trusted name in security for over 60 years, believes in the highest testing of quality for our products. We stand behind it with one of the best warranties in the industry. See price book for details.



Kwikset

19701 Da Vinci
Lake Forest, CA, 92610
1-800-327-LOCK (5625)
www.kwikset.com
LIT 7-3-27 12/09 • 15499
Copyright © 2009



Product Portfolio

KEY CONTROL™ DEADBOLT

The Smart Alternative to Master Keying

PROVIDING ONE-KEY CONTROL FOR MULTI-FAMILY APPLICATIONS

Key Control

- Top concealed cylinder provides one-key control for the property manager
- Lower exposed cylinder allows unique user keys for the tenant
- Re-key your user or control cylinder at any time in seconds
- Maintain key control throughout tenant or employee turnover

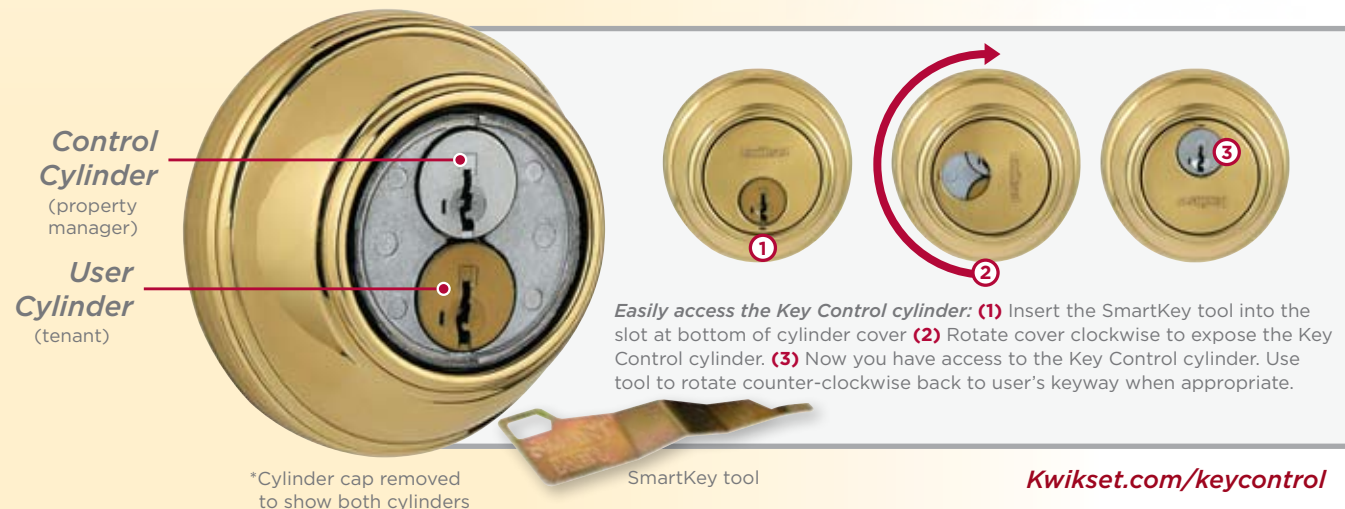
Increased Efficiency

- Re-key the lock without removing from the door
- Save time & money by re-keying yourself



FEATURING **SMARTKEY** RE-KEY TECHNOLOGY

Perfect for multi-family dwellings, student housing, assisted living & rental properties.



*Cylinder cap removed to show both cylinders

SmartKey tool

Kwikset.com/keycontrol

Security



*ANSI/BHMA (American National Standards Institute) (Builders Hardware Manufacturers Association)

CERTIFIED SECURITY

Locks are graded by independent agency (ANSI) and are BHMA Certified.

- Grade 1 - Heavy Duty Commercial Security
- Grade 2 - High Residential Security
- Grade 3 - Residential Security

Pick Resistant - SmartKey withstands the highest level of UL pick testing, UL 437, Par. 11.6

Touchpad Electronic Deadbolt

Which Kwikset Touchpad Electronic Deadbolt is right for you?

	Powerbolt	SMARTKEY CODE
Installs in minutes with just a screwdriver	✓	✓
Fits standard doors (1 3/8" - 2")	✓	✓
Two customizable access codes	✓	✓
One Touch Locking	✓	✓
Alarm sounds after 3 consecutive incorrect codes are entered	✓	✓
SmartKey Cylinder	✓	✓
No new screw holes required	✓	✓
Back-lit keypad	✓	✓
Customizable features (audible beep, auto-lock, blinking lights)	✓	✓
Finished Interior	✓	✓

Featuring: **SMARTKEY** RE-KEY TECHNOLOGY

	3	LO3	5	11P	15	15A	26	26D	501	502	514
Handlesets											
Amherst		•		•	•	•				•	
Arlington	•		•	•	•	•			•	•	•
Ashfield		•	•	•	•	•			•	•	•
Avalon		•	•	•	•	•	•		•	•	•
Chelsea	•	•	•	•	•	•	•		•	•	•
Gibson	•	•	•	•	•	•	•		•	•	•
Hawthorne		•	•	•	•	•			•	•	•
Shelburne		•	•	•	•	•			•	•	•
Sheridan		•	•	•	•	•	•		•	•	•
Sonoma	•	•	•	•	•	•	•		•	•	•
Wellington		•	•	•	•	•			•	•	•
Knobs											
Abbey	•		•					•			
Cameron	•			•	•						
Circa	•	•				•	•	•			
Copa	•		•			•	•	•			
Hancock	•	•				•	•	•		•	•
Laurel		•	•	•	•	•	•	•		•	•
Phoenix	•		•	•	•	•	•	•		•	•
Levers											
Ashfield	•	•	•	•	•	•	•	•	•	•	•
Avalon	•	•	•	•	•	•	•	•	•	•	•
Brooklane		•	•	•	•	•	•	•	•	•	•
Commonwealth	•	•	•	•	•	•	•	•	•	•	•
Lido	•	•	•	•	•	•	•	•	•	•	•
Pembroke	•	•	•	•	•	•	•	•	•	•	•
Tustin	•	•	•	•	•	•	•	•	•	•	•
Designer Roses											
Arched				•	•						•
Oval											•
Deadbolts											
780/785	•	•	•	•	•	•	•	•	•	•	•
980/985	•	•	•	•	•	•	•	•	•	•	•
816 Key Control	•	•	•	•	•	•	•	•	•	•	•
Residential Electronic Locks											
909 SmartCode		•		•	•						
907 Powerbolt		•		•	•						

Featuring: **SMARTKEY** RE-KEY TECHNOLOGY

	3	LO3	5	11P	15	15A	26	26D
Handlesets								
Dakota	•		•	•	•	•		•
*Farmington			•					
Knobs								
Cove	•		•	•	•	•		•
Polo			•	•	•	•	•	•
Tylo	•		•					•
Levers								
Delta	•	•					•	•
Dorian	•	•		•	•	•	•	•
Deadbolts								
660/665	•		•	•	•	•	•	•

*Farmington available through January 4, 2010 (not available in SmartKey).

Finishes

Our philosophy is that a finish can make all the difference. From Polished Brass to Venetian Bronze, the finish you choose makes a statement. It can, quite literally, finish off a room, giving it style and polish. We offer a full spectrum of finishes and textures.

